

[www.pwc.co.uk](http://www.pwc.co.uk)

# *South Tees Hospitals NHS Foundation Trust*

## Presentation to Governors Year ended 31 March 2015

July 2015

**pwc**

---

# *Agenda*

Introductions

Purpose of our reporting to governors

Audit of the financial statements 2014/15

Quality Report 2014/15

Charitable Funds 2014/15

Conclusion and summary

---

# ***Introductions***

## **Your experienced PwC Team**

- Greg Wilson, Partner
- Kelly Douglas, Senior Manager
- Helen James, Team Leader

---

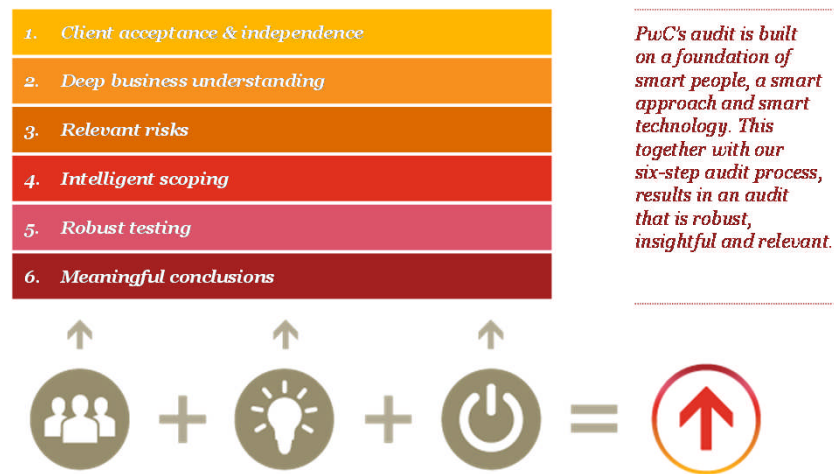
## ***Reporting to the Council of Governors***

The purpose of our presentation is to provide a high level summary of the results of our 2014/15 external audit which is accessible for the Council of Governors as well as other interested stakeholders. In particular we highlight:

- The scope of our work; and
- Key findings - including:
  - significant audit matters (both on the financial statements of the Trust and the Quality Report); and
  - other matters.

# ***Key messages – audit of the financial statements 2014/15***

- The PwC audit approach
- Overview of the audit
- Unqualified audit opinion with emphasis of matter paragraph
- Qualified opinion on economy, efficiency and effectiveness
- Thank you to Trust staff



---

# ***Key messages – audit of the financial statements 2014/15***

## **Emphasis of matter - Going Concern**

- Our work included:
  - Review of the Trust's going concern assessment
  - Assessment of the 2015/16 annual plan and underlying assumptions submitted to Monitor
  - Assessment of the proposed 2015/16 CIP target
  - Determining the Trust's cash requirements
- PwC Technical panel to determine impact on our opinion
- Reviewing Trust disclosures to ensure transparency

---

## ***Key messages – Quality Report 2014/15***

- We issued an adverse conclusion on the percentage of incomplete pathways within 18 weeks for patients on incomplete pathways at the end of the reporting period indicator
- The Quality Report was:
  - Prepared in line with Monitor guidance; and
  - Not inconsistent with other information.

---

## ***Key messages – Quality Report 2014/15***

- Performance indicators:
  - Maximum waiting time of 62 days from urgent GP referral to first treatment for all cancers;
  - Percentage of incomplete pathways within 18 weeks for patients on incomplete pathways at the end of the reporting period; and
  - Unadjusted mortality (local indicator – not subject to limited assurance report).
- Long form report to Governors
- 2 recommendations relating to the content of the Quality Report for 2014/15 and 13 regarding the three performance indicators tested



---

## ***Audit of the charitable funds 2014/15***

- Group and consolidation work completed
- Charitable funds audit ongoing

---

## ***Conclusion and summary***

We would like to thank all those involved at the Trust for their contribution.

Progress has been made in addressing the recommendations and issues that arose from previous year external audits.

We look forward to working with the Trust in our new role as internal auditors.

---

# *Questions?*

This publication has been prepared for general guidance on matters of interest only, and does not constitute professional advice. You should not act upon the information contained in this publication without obtaining specific professional advice. No representation or warranty (express or implied) is given as to the accuracy or completeness of the information contained in this publication, and, to the extent permitted by law, PricewaterhouseCoopers LLP, its members, employees and agents do not accept or assume any liability, responsibility or duty of care for any consequences of you or anyone else acting, or refraining to act, in reliance on the information contained in this publication or for any decision based on it.

© 2015 PricewaterhouseCoopers LLP. All rights reserved. In this document, "PwC" refers to PricewaterhouseCoopers LLP (a limited liability partnership in the United Kingdom) which is a member firm of PricewaterhouseCoopers International Limited, each member firm of which is a separate legal entity.